

THE  
PETER LOUGHEED  
LEADERSHIP INITIATIVE

**STUDENTS' UNION PERSPECTIVE**

# Overview



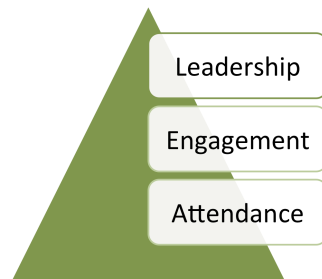
- Frank Robinson proposal
- Donor interest
- Peter Meekison brought on board
- Initiative launched
- Building plans for approval
- SU perspective

# Early Days



- Presentation to Dean's Council

## Leadership: Bringing out the Best



## University of Alberta Leadership College Proposal

**Purpose:** to honour the brand promise to "uplift the whole people" through leadership, through operation of a residential college

- Leadership programming provided
- Will offer opportunities for formal and informal leadership/learning possibly leading to a Certificate in Leadership
- Will be guided by a senior academic "principal in residence"
- Residence will house 150 students on North Campus
- Guest accommodation for honorary degree recipients, distinguished alumni, visiting speakers etc.



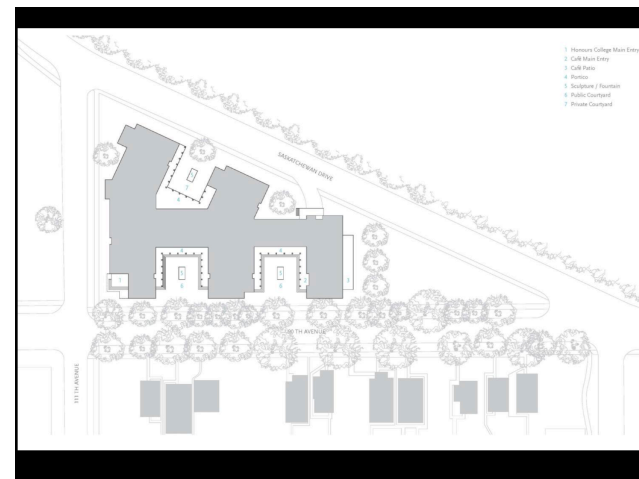
## Opportunities for Leadership

Curricular (classes, projects, co-ops, CSL)

Student clubs, SU, GSA, frats,

Athletics

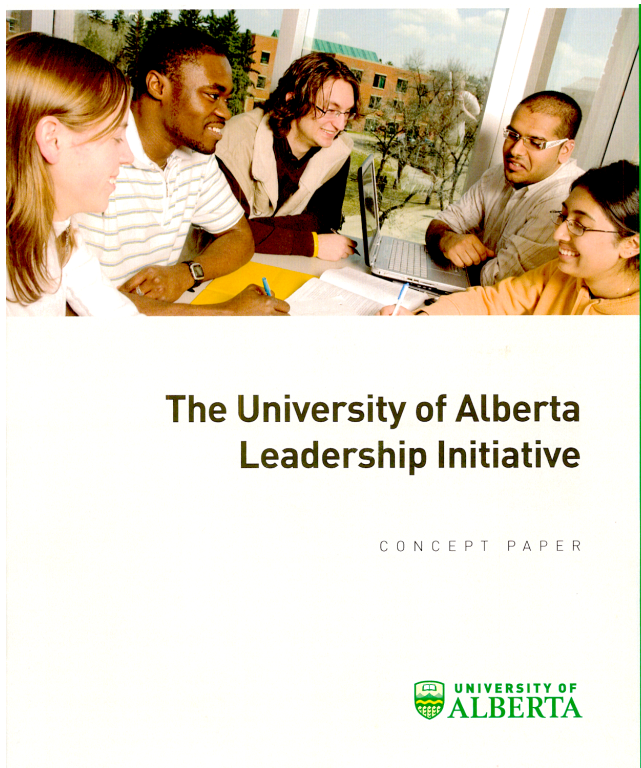
Volunteerism (SSDS, SAC, philanthropy)



# Early Days



- Donor Interest



THE UNIVERSITY OF ALBERTA | LEADERSHIP INITIATIVE

## FUNDRAISING GOALS

### NAMING OF THE LEADERSHIP COLLEGE: \$25M

- Residence on campus for campus leaders
- Curriculum including intentional teaching of leadership
- Leadership service opportunities

### INTERNATIONAL STUDENT EXPERIENCES: \$40M

- Support more than 50 students engaged in year-long international education and research experiences

### UNDERGRADUATE RESEARCH INITIATIVE: \$20M

- Support more than 200 students conducting research experiences on campus or through domestic and global research partners

### NAMED LEADERSHIP COLLEGE RESIDENTIAL FACILITY: \$10M

- Support construction costs associated with the facility — estimated at \$40M

### COMMUNITY SERVICE LEARNING: \$10M

- Support more than 1,000 students participating in service experiences, domestically and globally

### NAMED LEADERSHIP SPEAKER SERIES: \$3M ENDOWED

- To bring global leaders to the University campuses (endowment supports honoraria, public and private events)
- Visit to include public lecture, private dinner hosted by president, visit with faculty leaders and student leaders

10

# Acceleration



- Peter Meekison appointed as the President's lead on the leadership college
- Proposed a 144 person college:
  - Students apply or are nominated by Faculty
  - Students start in 3<sup>rd</sup> year
  - Continue taking courses in their degree
  - Mandatory CSL and capstone
  - Speaker series
  - Certificate and note on transcript



# Acceleration



- Announced the “Lougheed Leadership Initiative”
- Partnership with the Banff Centre
- Struck an advisory board
- Promised support to CSL, URI, Leadership cohorts, Green and Gold grants and Emerging Leaders



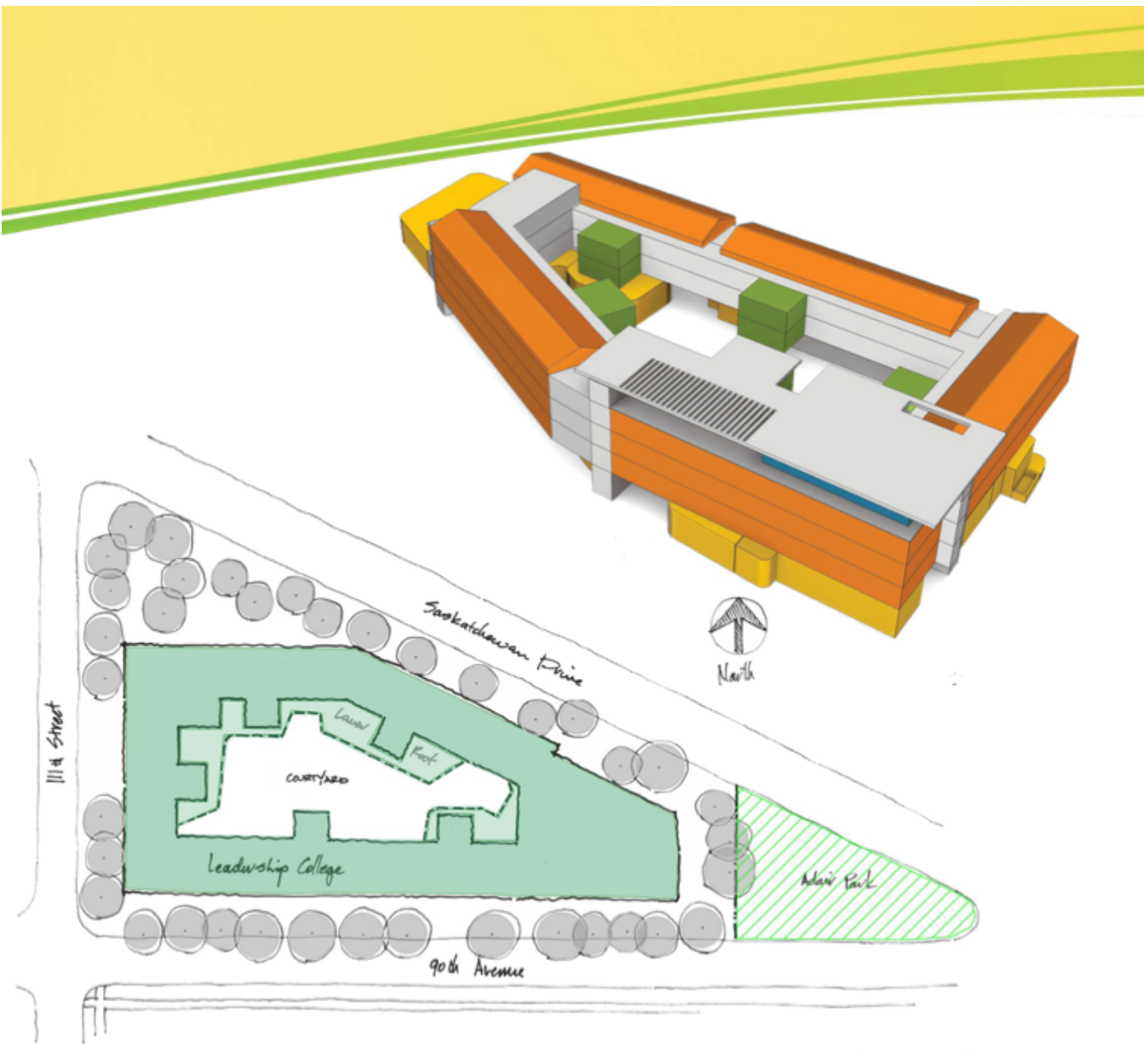
At present, The Peter Lougheed Leadership Initiative Advisory Board is comprised of the following individuals:

- Indira Samarasekera, President and Vice-Chancellor, University of Alberta
- Jeff Melanson, President, The Banff Centre
- Douglas Goss, Chair, Board of Governors, University of Alberta
- Brenda Mackie, Chair, Board of Governors, The Banff Centre
- Stephen Lougheed, Lougheed family representative
- Joe Lougheed, Lougheed family representative
- John Ferguson, Lougheed family representative
- Bunny Ferguson, Lougheed family representative
- Robert D. Walker, Governor, The Banff Centre
- O'Neil Outar, Vice-President (Advancement), University of Alberta

# Acceleration

- Space allocation and facility design moving through GFC Facilities Development Committee







# SU Perspective



- Donors shouldn't dictate what students learn
- Leadership skills could be embedded within courses in all Faculties
- Student group executives are already leaders and should be better supported
- Other residences are not “follower colleges”
- We under-fund our current leadership development programs like URI, CSL, ELP, and Study Abroad.
- Leadership opportunities should be open to anyone: students living with family, students on other campuses, students who can't afford the college, and students in strict academic programs.
- A leadership college is not the best use of donor dollars.

# SU Perspective



Questions?